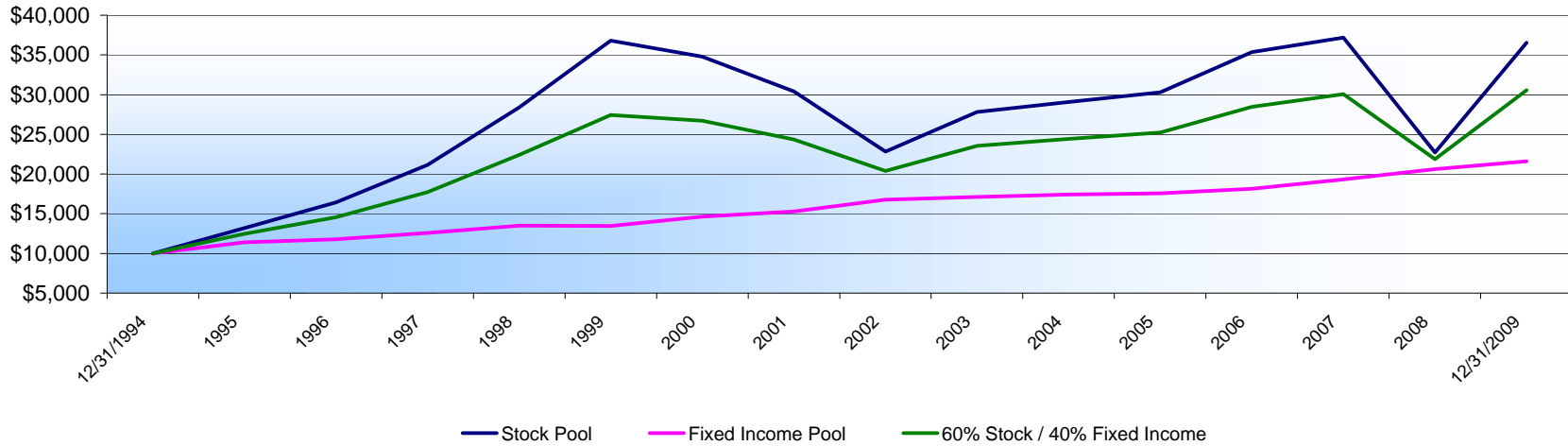


Hypothetical \$10,000 Investment Comparison

From 12-31-1994 to 12-31-2009



This chart tracks the change in market value of a hypothetical \$10,000 investment in the United Methodist Foundation's Stock Pool and Fixed Income Pool. Results for the 60% Stock/40% Fixed Income Pools reflect the pro forma results of the Stock Pool and the Fixed Income Pool using those percentages. Results are net of fees with all distributions of income and capital gains reinvested from December 31, 1994 through December 31, 2009. Figures above are past results and are not predictive of results in future periods; current & future results may be lower/higher than those shown.

	<u>12/31/1994</u>	<u>1995</u>	<u>1996</u>	<u>1997</u>	<u>1998</u>	<u>1999</u>	<u>2000</u>	<u>2001</u>	<u>2002</u>	<u>2003</u>	<u>2004</u>	<u>2005</u>	<u>2006</u>	<u>2007</u>	<u>2008</u>	<u>12/31/2009</u>
Stock Pool	\$10,000	\$13,205	\$16,420	\$21,145	\$28,389	\$36,787	\$34,771	\$30,397	\$22,828	\$27,824	\$29,065	\$30,306	\$35,355	\$37,201	\$22,711	\$36,538
Fixed Income Pool	\$10,000	\$11,397	\$11,784	\$12,580	\$13,475	\$13,446	\$14,633	\$15,275	\$16,759	\$17,109	\$17,430	\$17,580	\$18,131	\$19,307	\$20,626	\$21,592
60% Stock / 40% Fixed Income	\$10,000	\$12,482	\$14,565	\$17,719	\$22,424	\$27,450	\$26,716	\$24,348	\$20,400	\$23,538	\$24,411	\$25,216	\$28,465	\$30,043	\$21,877	\$30,560